



Contact Us

We welcome conversation, engagement and interaction with you on any aspect of how we propose to progress the Dyrick Hill Wind Farm project and particularly on how we communicate project information to you. If you would like to chat about this proposed project further please contact us via any of the below means.

Website : www.dyrickhillwindfarm.ie

Email : dyrickhill@emp.group

Phone : 01 588 0178

Write : EMPower, 2 Dublin Landings, North Wall Quay, North Dock, Dublin 1

Project Information Evening:

The project design team will facilitate the second in-person Dyrick Hill Project Information Evening in the **Sliabh gCua Community Centre, Touraneena on the 07/12/2022** between **4.00pm and 8.00pm**. Please drop in anytime between 4pm and 8pm to discuss the proposed Dyrick Hill wind farm project and its associated design process and community benefit fund structure with members of the project design team.

All project engagement events will be advertised in local newspapers, project newsletters and on the project website. Members of the project design team are available, at the contact details listed on this page, to talk through any aspect of the Dyrick Hill wind farm project design process which you would like to discuss further.

Proposed Dyrick Hill Wind Farm Project

Project Newsletter No. 4 – November 2022



Looking south from the center of the Dyrick Hill Project Study Area

Project Design Process

Before we reach a final design proposal on any EMPower project, we choose to undertake several separate, individual design iterations. The design process for the proposed Dyrick Hill wind farm project started with a review of existing available baseline information. This enabled us to avoid or minimise potential impacts and included a design process that limits the angle of slope of the ground where development could conceivably occur. This also included a setback distance from watercourses and residences, as well as a setback distance from any nearby European designated environmentally sensitive habitat sites. Following some ground truthing exercises this initial design step produces a potential "Buildable Area".

Following establishment of the project's "Buildable Area" an initial turbine layout is then progressed which considers the separation distance required between each turbine position as well as the results of more detailed ground and habitat investigation surveys. The resulting layout is called Design Iteration 1 as discussed in previous newsletters, at the project consultation evening and on project design webinars.

As further project studies evolve the location and alignment of the associated project's details, such as access roads and electrical infrastructure is developed to produce Design Iteration 2. On completion of all the projects associated site investigations and surveys, Design Iteration 3 is produced before a final design proposal is submitted to the consenting authority. The project detail discussed in this newsletter is Design Iteration 3.

After each stage of the above-mentioned iterative design process the project proposal is reassessed by all our project specialists which leads to a robust final design. This evolving iterative design process establishes the most suitable location for the proposed project infrastructure and is informed by rigorous Study Area assessments carried out over an extended period such as:

- Ecological and Aquatic Surveys
- Ornithological Surveys
- Geotechnical and Hydrological Ground Investigations
- Shadow Flicker Modelling
- Noise Modelling
- Archaeological Surveys
- Landscape and Visual Assessment



Also, in order to ensure that the Dyrick Hill projects Environmental Impact Assessment process is appropriately carried out, an information document detailing project particulars is prepared and circulated to a list of statutory and non-statutory consultees to ensure that the proposed project's Environmental Impact Assessment is addressing all relevant topics specific to the local area for the proposed Dyrick Hill project.

The list of consultees can be individual for each project. For the proposed Dyrick Hill project this consultee list includes Fáilte Ireland, National Parks and Wildlife, Waterford City & County Council, Geological Survey Ireland, Inland Fisheries Ireland, area telecommunication providers, Transport Infrastructure Ireland, The National Monuments Service, The Aviation Authority, plus many more. Responses and recommendations received from these bodies are implemented by the project design team in order to reach a robust final design proposal.



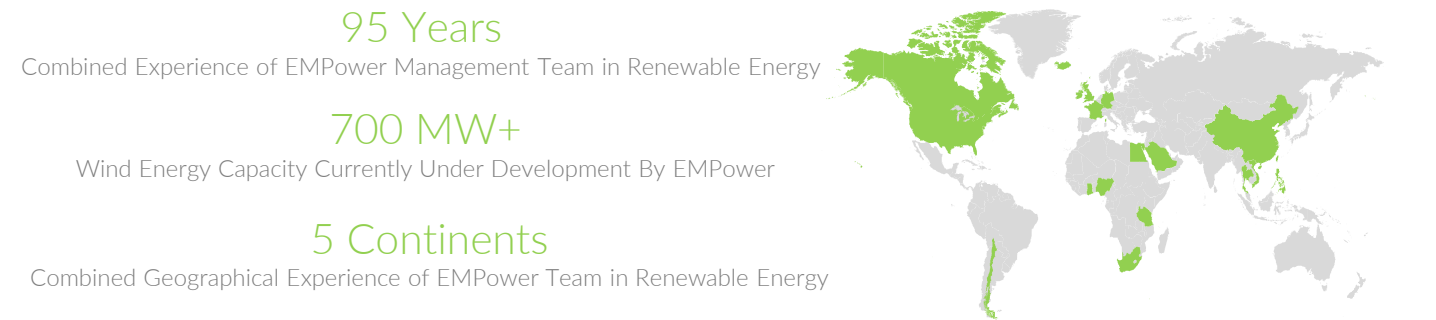
Photomontage of the proposed Dyrick Hill project from Boolahallagh. Viewing distance is approximately 1.9 kilometre

Who Are EMPower.

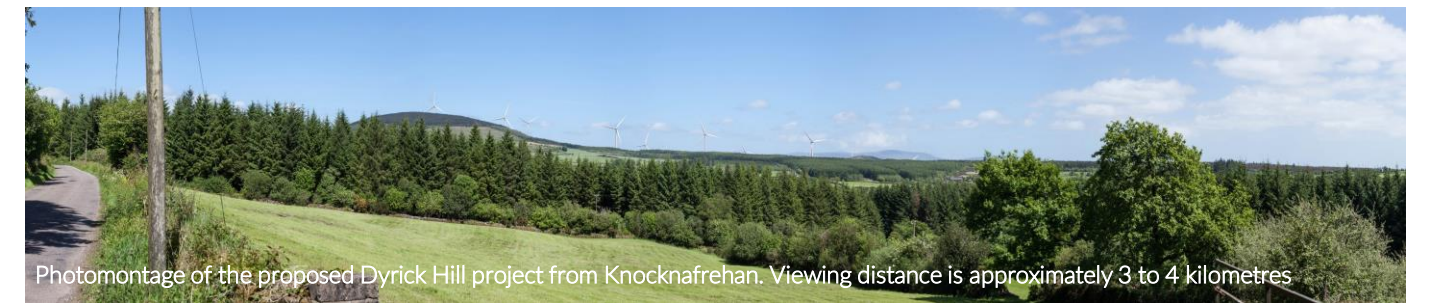
EMPower is an Irish renewable energy developer with over 750 MW in development in Europe and Africa. Our senior management team comprises five Irish professionals with a combined 95 years' experience delivering projects from conception to operation across five continents. EMPower's headquarters is in Dublin. EMPower is owned by GGE Ireland Limited, Wind Power Invest A/S and EMP Holdings Limited. Our vision is to provide low carbon, ecologically non-invasive, affordable energy to facilitate Ireland's expanding economy and sustainable energy targets.

Our Commitment

Our commitment is to engage meaningfully with our project stakeholders on decisions that concern them. We aim to do this in a timely manner, and we commit to building relationships and starting a conversation on what aspects of this proposed renewable energy project could work best for this local area. We feel that designing any proposed project in this manner makes better social and business sense.



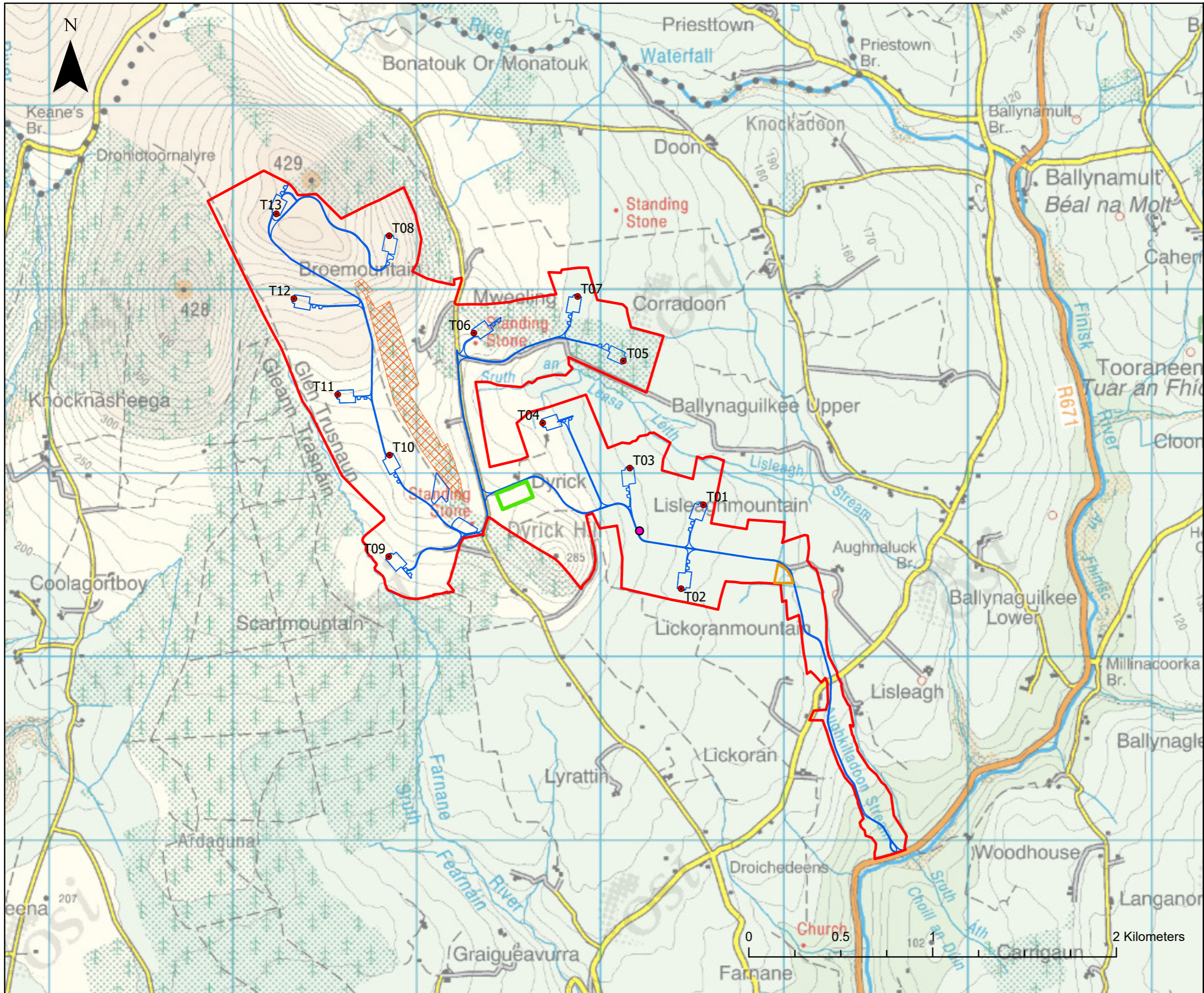
Photomontage of the proposed Dyrick Hill project from Corradoon. Viewing distance is approximately 1.2 kilometre



Photomontage of the proposed Dyrick Hill project from Knocknafrehan. Viewing distance is approximately 3 to 4 kilometres



Photomontage of the proposed Dyrick Hill project from Coumaraglin. Viewing distance is approximately 10 kilometres



- Legend**
- Meteorological Mast
 - Proposed Turbines
 - Temporary Storage Compound
 - Substation
 - Site Infrastructure
 - Redline Boundary
 - Development Exclusion Zone

Rev	Date	By	Comment

Client


Client Representative


Project
 Proposed Wind Farm
 at Dyrick Hill, Co. Waterford

Title
 Design Iteration 3 - Subject to
 Change

CYAL50165696
 COPYRIGHT ORDNANCE SURVEY IRELAND / GOVERNMENT OF IRELAND

Drg. By	SB	Drg No	-
Checked By	RM	Rev	2
Stage	Pre-Planning	Date	17/11/22
Scale	1:20,000 (A3)	Figure	