

Proposed Dyrick Hill Wind Farm Project

Project Newsletter – Winter 2021

EMPower



Looking west at a section of the potential project Study Area from the Touraneena area

Who Are EMPower?

EMPower is an Irish renewable energy developer with over 700 MegaWatts in development in Europe and Africa. Our senior management team comprises five Irish professionals with a combined 95 years' experience delivering renewable energy projects from conception to operation across five continents. EMPower's headquarters is in Dublin.

EMPower is owned by GGE Ireland Limited, Wind Power Invest A/S and EMP Holdings Limited. We commenced project development in Ireland in 2018 following the government's announcement of the Renewable Energy Support Scheme (RESS) and Ireland's revised electricity target of 70% (now 80%) renewables by 2030.

Our vision is to provide low carbon, ecologically non-invasive, affordable energy to facilitate Ireland's expanding economy and sustainable energy targets.

Our Commitment

Our commitment is to engage meaningfully with our stakeholders on decisions that concern them. We aim to do this in a timely and respectful manner, and we commit to building relationships and starting a conversation on what aspects of this proposed renewable energy project could work best for this local area. We feel that designing any proposed project in this manner makes better social and business sense.

95 Years

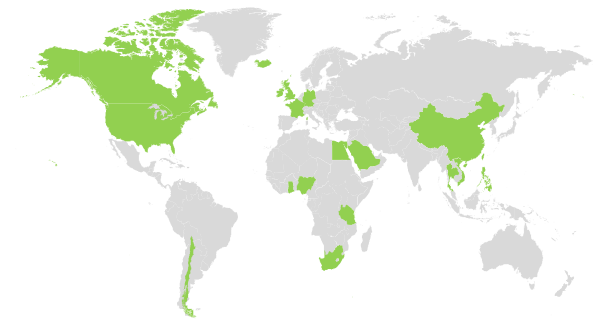
Combined Experience of EMPower Management Team in Renewable Energy

700 MW+

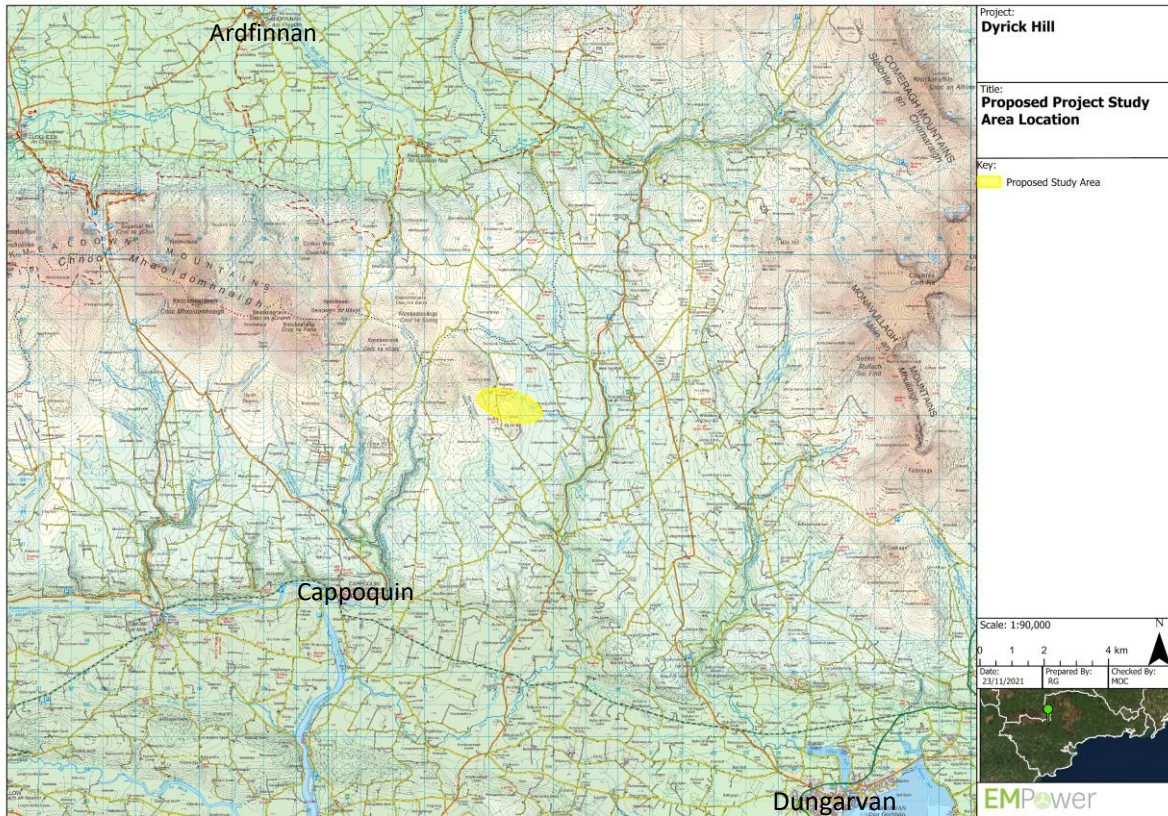
Wind Energy Capacity Currently Under Development By EMPower

5 Continents

Combined Geographical Experience of EMPower Team in Renewable Energy



Proposed Dyrick Hill Wind Farm Study Area



We are currently in the early stages of assessment for this proposed project. The Dyrick Hill Study Area extends over approximately 400 hectares consisting predominantly of farmland, forestry and upland heath. Measured in a straight-line direction, this Study Area is located approximately 16km northwest of Dungarvan and 8.5km southwest of Ballymacarbry in the townlands of Dyrick, Ballynaguilkee Upper, Broemountain and Lisleaghmountain. This area is classified, in the current Waterford City & County Development Plan, as being within an area that is "open for consideration" for wind farm development.

Proposed Project Schedule

Proposed Dyrick Hill Schedule	2020				2021				2022				2023				2024				2025				2026				2027			
	Q1	Q2	Q3	Q4	Q1	Q2	Q3	Q4	Q1	Q2	Q3	Q4	Q1	Q2	Q3	Q4	Q1	Q2	Q3	Q4	Q1	Q2	Q3	Q4	Q1	Q2	Q3	Q4	Q1	Q2	Q3	Q4
Ornithology Studies																																
Planning Consultant (EIAR)																																
Stakeholder Consultation																																
Wind Measurement (Met Mast)																																
Planning Submission & Consideration																																
Grid Connection Application																																
Detailed Project Design																																
Project Construction																																
Project Operational																																

Note: Q1, Q2, Q3 and Q4 in the above schedule represent yearly quarters. For example, Q1 represent the first quarter of that year

Environmental Impact Assessment

Following initial Study Area assessments, EMPower have commissioned Sligo based environmental and engineering consultancy, Jennings O'Donovan & Partners Limited to complete a detailed environmental assessment which will culminate in an Environmental Impact Assessment Report (EIAR) for the proposed Dyrick Hill Wind Farm project. This will assess what effects any project proposal could have on the environment and local community and ensure that any sensitive areas of the Study Area are protected throughout the projects design process.

The proposed Dyrick Hill Wind Farm Environmental Impact Assessment Report will cover a number of topics, including but not limited to:

- Population and Human Health;
- Biodiversity;
- Land;
- Soil;
- Water;
- Air;
- Climate;
- Material Assets;
- Cultural Heritage;
- Noise;
- Landscape and Visuals.



In order to ensure that this projects Environmental Impact Assessment Report compilation is appropriately carried out, EMPower will prepare and circulate an information scoping document detailing project particulars to statutory and non-statutory consultees. This ensures that the Environmental Impact Assessment process is addressing all relevant topics specific to the local area for this project. The final Environmental Impact Assessment Report will be made available for public comment as part of the final planning application.

The list of consultees for the project scoping process can be individual for each project. For the proposed Dyrick Hill project this consultee list will include National Parks and Wildlife, Inland Fisheries Ireland, area telecommunication providers, Transport Infrastructure Ireland, Waterford City & County Council, The Aviation Authority and Fáilte Ireland plus many more organisations and bodies.

Next Steps

- To inform a potential wind farm layout and design, Environmental Studies will progress for the Study Area over the coming year.
- Jennings O'Donovan, a dedicated planning consultant, was appointed in Summer 2021 to carry out the detailed studies for the proposed project which will inform a suitable project design for this Study Area.
- To gather detailed data around wind speed and direction, an 80 meter Meteorological Mast (met mast) is proposed for erection in the Study Area over the coming weeks.
- Baseline Noise Monitoring in conjunction with dwellings in proximity to the Study Area will be carried out over the coming months to inform a project design.
- Community engagement will continue for this proposed project, sharing accurate project information and conversing on community queries and questions as they arise.

Contact Us

We welcome conversation, engagement and interaction with you on any aspect of how we propose to progress the Dyrick Hill Wind Farm project and particularly on how we communicate project information to you. If you would like to chat about this proposed project further please contact us via any of the below means.

Website : www.dyrickhillwindfarm.ie

Email : dyrickhill@emp.group

Phone : 01 588 0178

Write : EMPower, 2 Dublin Landings, North Wall Quay, North Dock, Dublin 1

EMPower will host a specific project consultation webinar event for the proposed Dyrick Hill project in early 2022 with the aim of introducing up to date project design information and to discuss any project related queries with local residents and any interested stakeholders.

We will advertise this webinar event in local newspapers, on the project website and will also distribute notification door to door to local residents prior to the event.

Thank you very much for taking the time to consider this information.

EMPower



Looking northwest across the potential project Study Area from the Lisleagh area